



SAMPSON COUNTY 911 & ES FACILITIES

CLINTON,
NORTH CAROLINA

CONSTRUCTION
DOCUMENTS

WINDOW ELEVATIONS
AND DETAILS

DATE 12.04.2020
PROJECT NO 20003
REVISIONS
NUM. DATE DESCRIPTION:

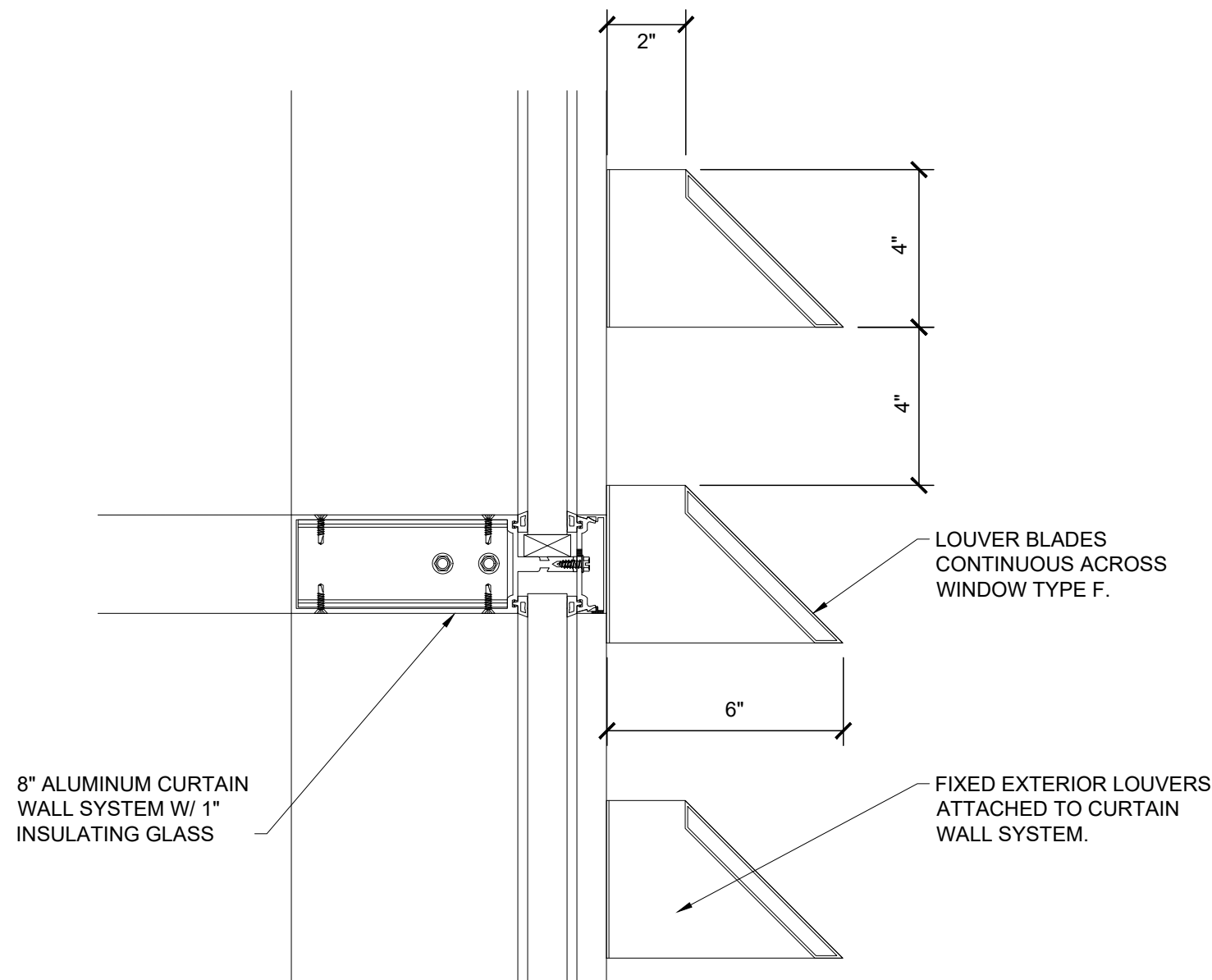
THIS DRAWING IS THE PROPERTY OF ADW ARCHITECTS, P.A. AND
SHALL NOT BE REPRODUCED OR COPIED IN WHOLE OR IN PART. IT
SHALL NOT BE USED ON ANY OTHER PROJECT OR GIVEN TO ANY
OTHER COMPANY OR AGENCY WITHOUT THE CONSENT OF ADW
ARCHITECTS, P.A.



SEAL

SHEET NUMBER

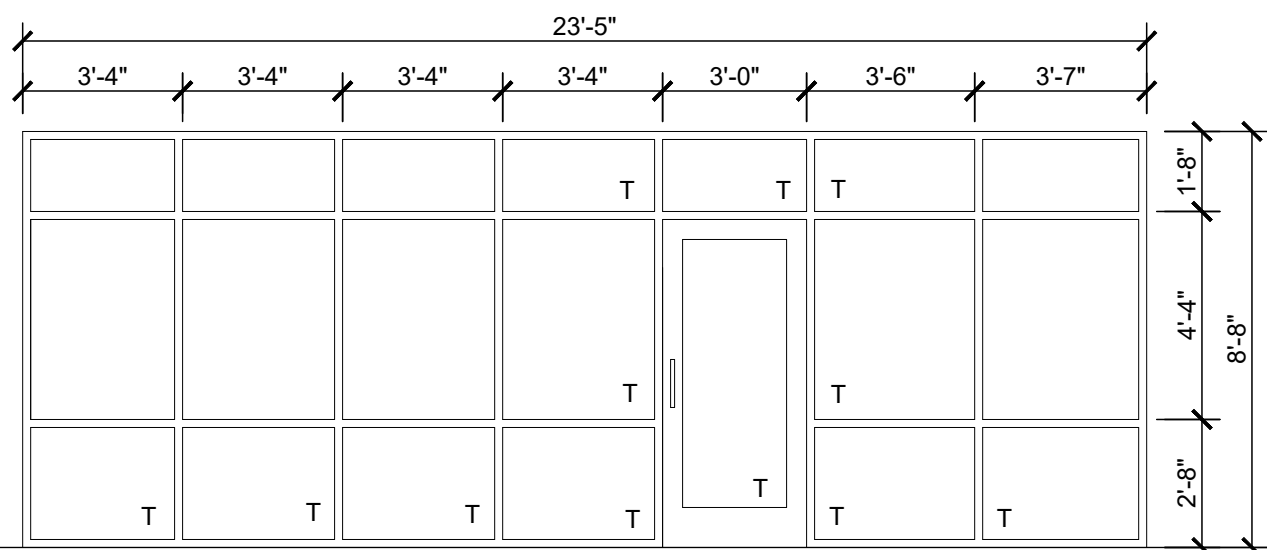
A601



FIXED EXTERIOR LOUVER DETAIL

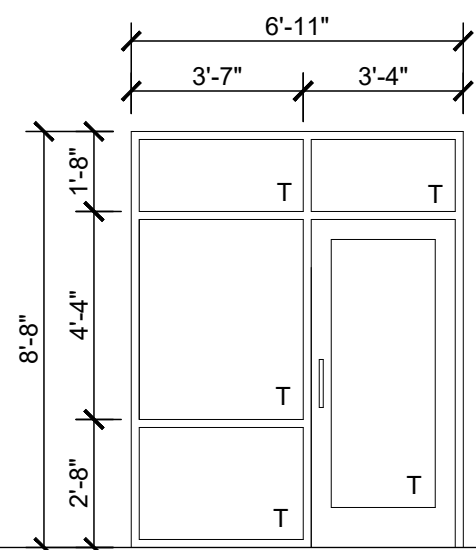
SCALE: 3" = 1'-0"

2



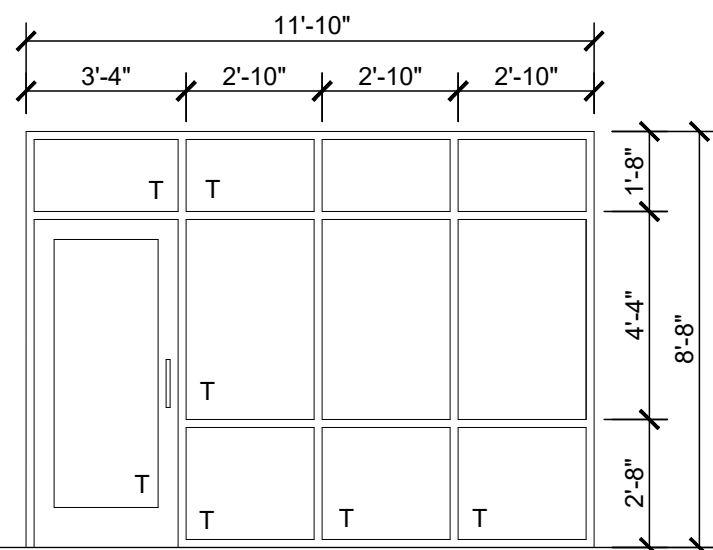
O

ALUMINUM STOREFRONT
SYSTEM W/ 1/2" TEMPERED
GLASS
T = TEMPERED GLASS



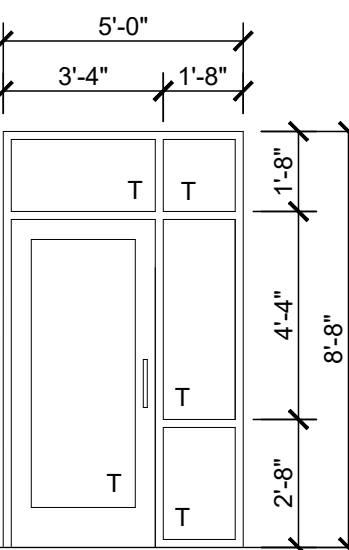
N

ALUMINUM STOREFRONT
SYSTEM W/ 1/2" TEMPERED
GLASS
T = TEMPERED GLASS



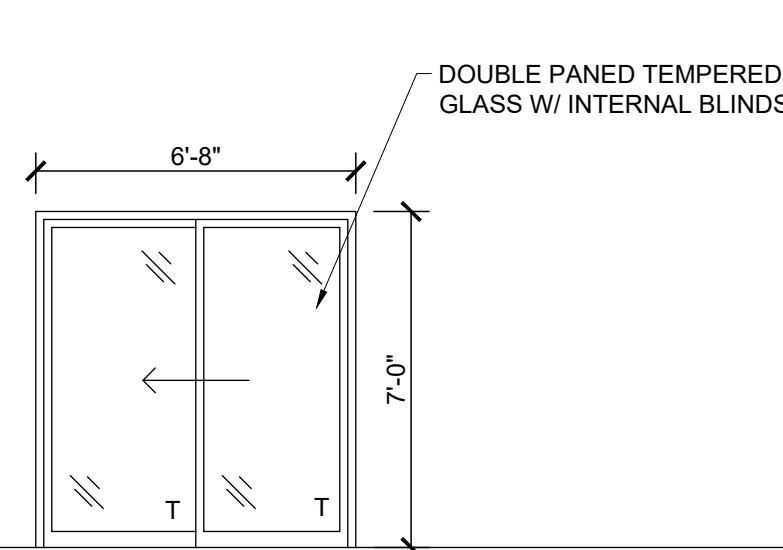
M

ALUMINUM STOREFRONT
SYSTEM W/ 1/2" TEMPERED
GLASS
T = TEMPERED GLASS



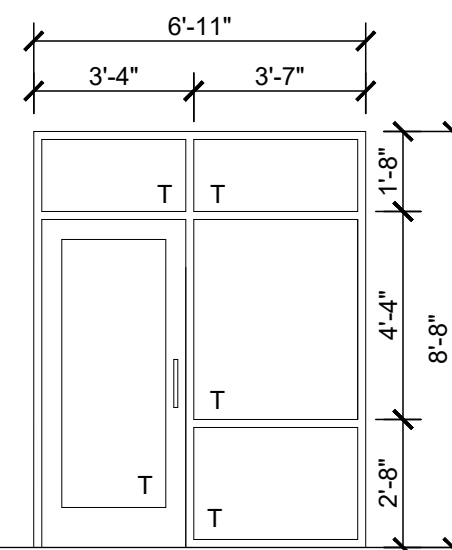
L

ALUMINUM STOREFRONT
SYSTEM W/ 1/2" TEMPERED
GLASS
T = TEMPERED GLASS



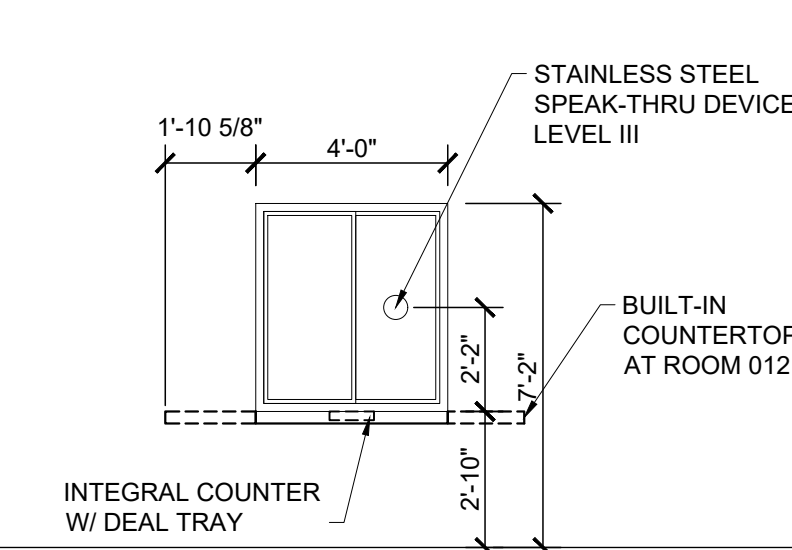
K

ALUMINUM SLIDING DOOR W/
DOUBLE PANED 1/2" TEMPERED
GLASS W/ INTERNAL BLINDS
T = TEMPERED GLASS



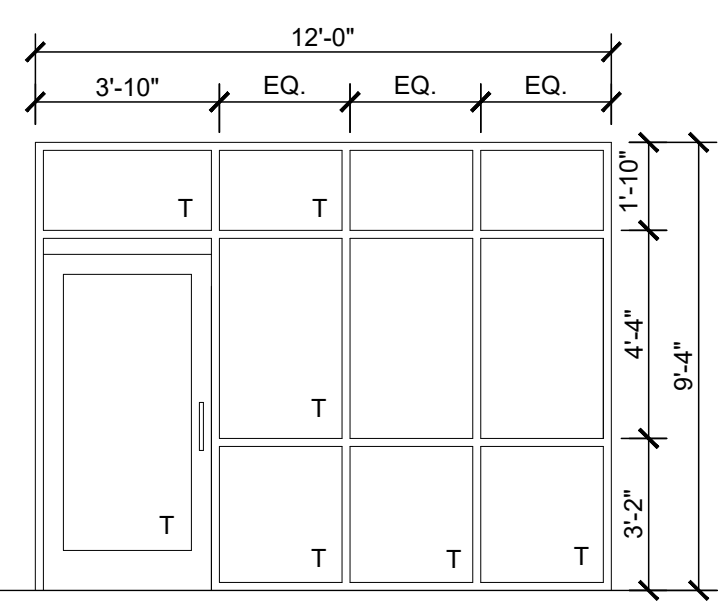
J

ALUMINUM STOREFRONT
SYSTEM W/ 1/2" TEMPERED
GLASS
T = TEMPERED GLASS



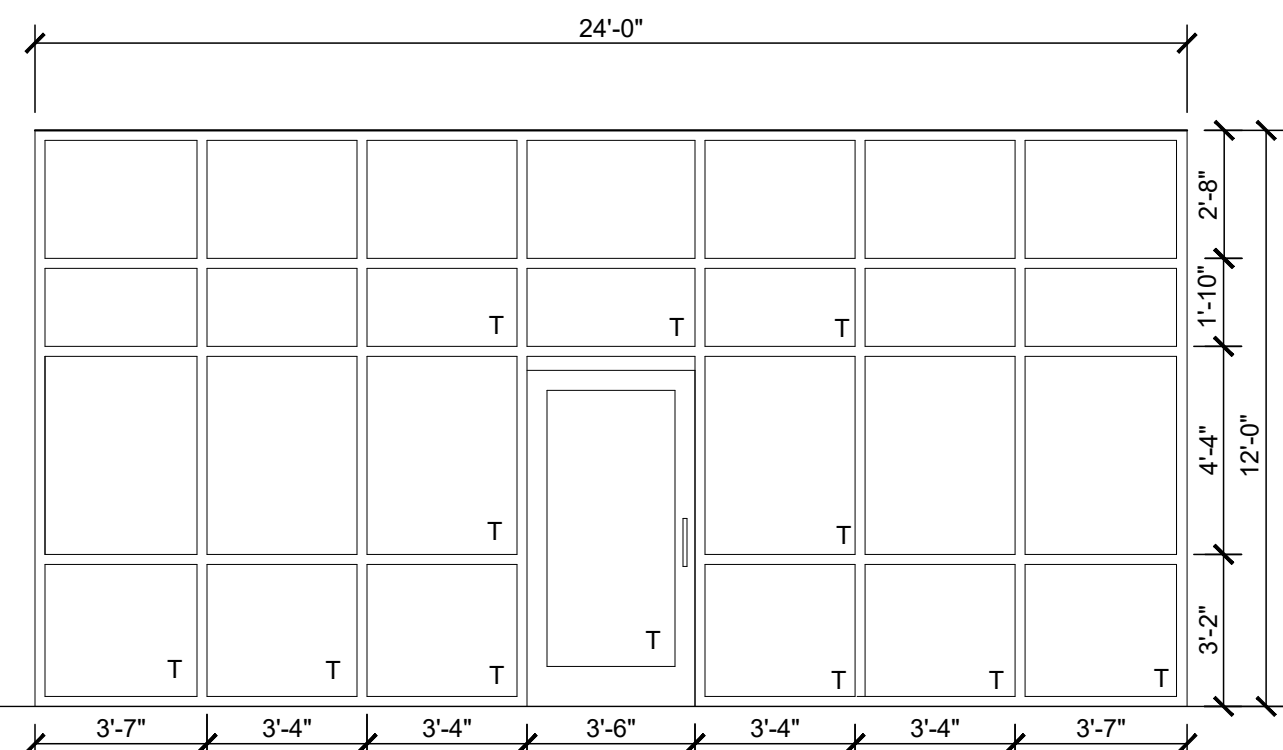
H

LEVEL 3 BULLET RESISTANT
SLIDING TRANSACTION
WINDOW SYSTEM AND
FRAME



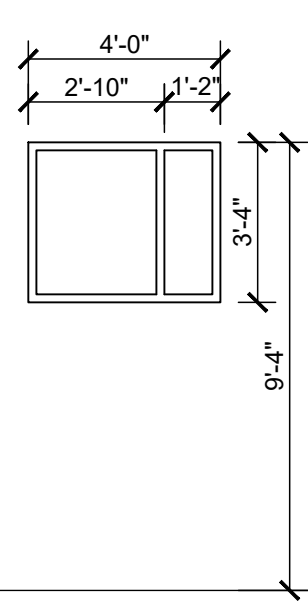
G

ALUMINUM STOREFRONT
SYSTEM W/ 1" INSULATING
GLASS
T = TEMPERED GLASS



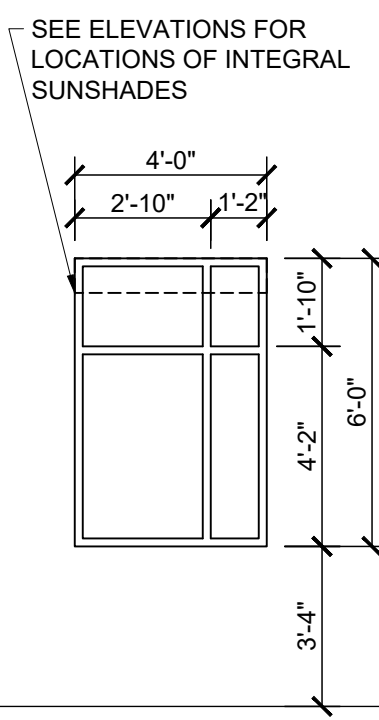
F

8" DEEP CURTAIN
WALL SYSTEM W/ 1" INSULATING
GLASS
T = TEMPERED GLASS



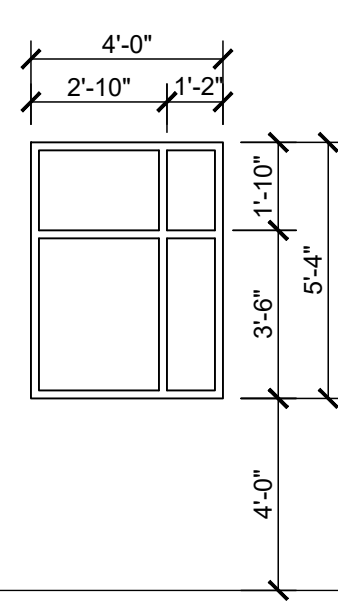
E

ALUMINUM STOREFRONT
SYSTEM W/ 1" INSULATING
GLASS



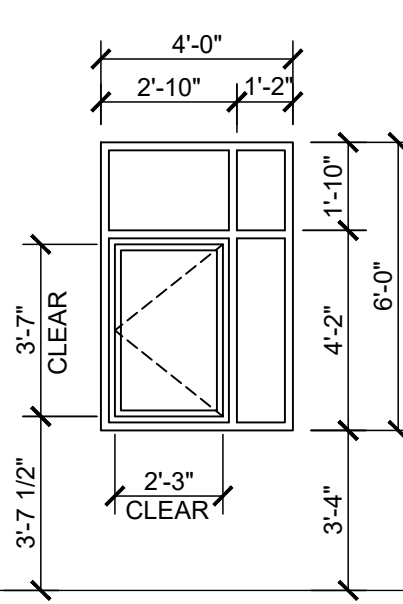
D

ALUMINUM STOREFRONT
SYSTEM W/ 1" INSULATING
GLASS



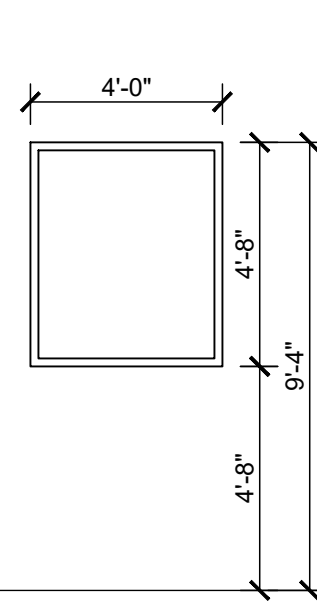
D1

LEVEL IV BULLET RESISTANT
WINDOW SYSTEM AND FRAME



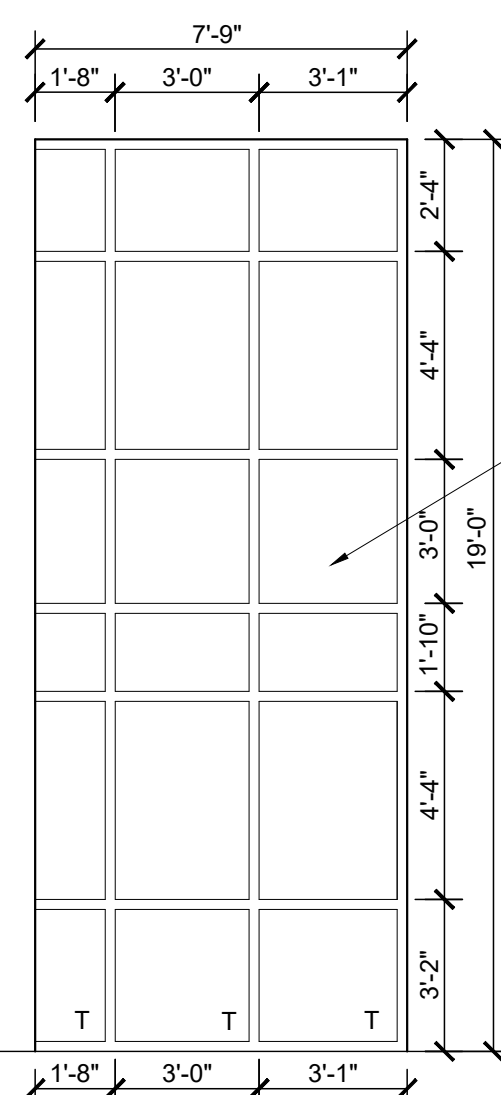
D2

LEVEL IV BULLET RESISTANT
WINDOW SYSTEM AND FRAME
WITH NON-B.R. OPERABLE
ALUMINUM CASEMENT INSERT
WITH LEVEL 2 (1") B.R.
GLASS-CLAD POLYCARBONATE
GLASS



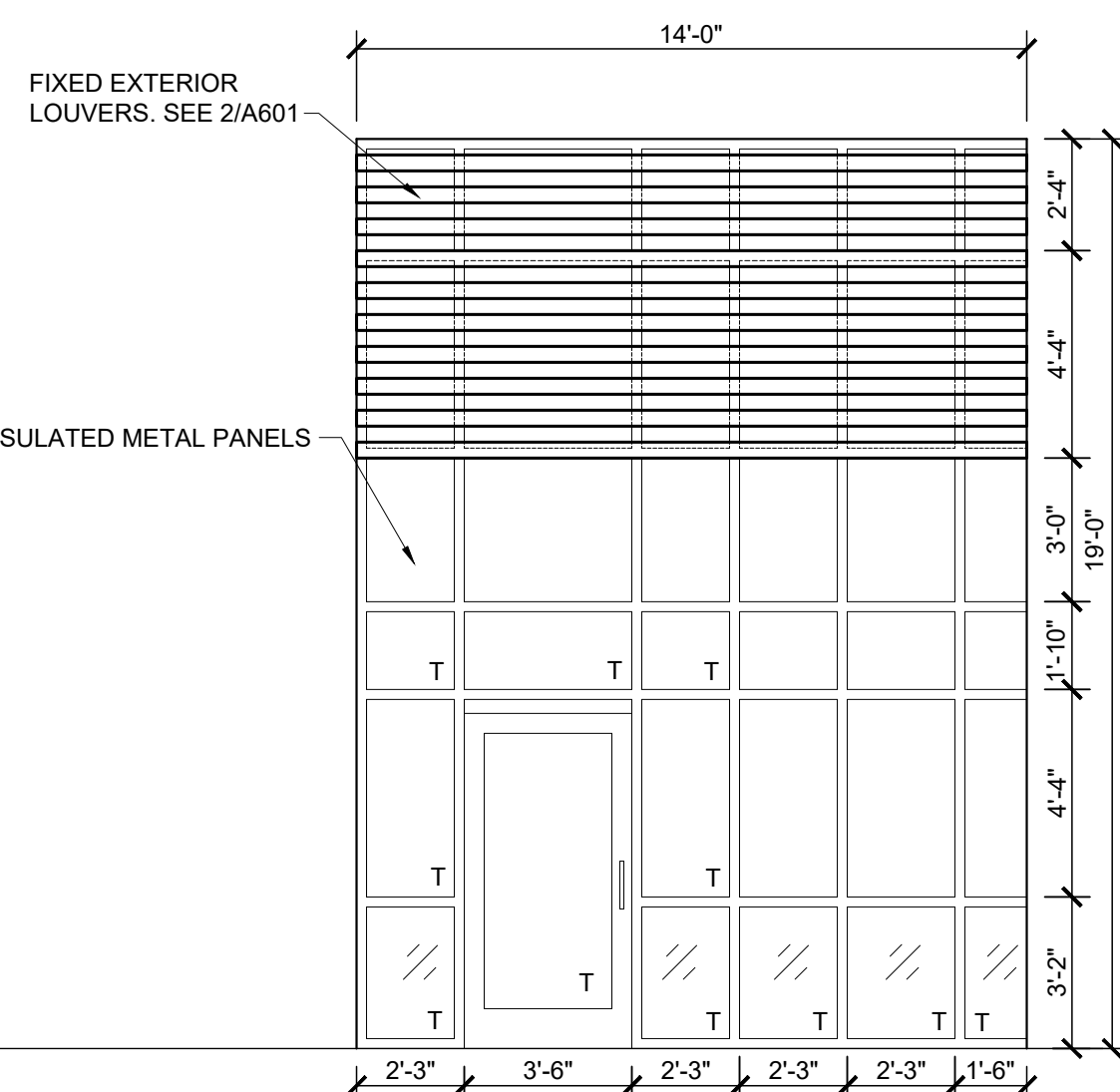
C

ALUMINUM STOREFRONT
SYSTEM W/ 1" INSULATING
GLASS



B

8" DEEP CURTAIN
WALL SYSTEM W/ 1" INSULATING
GLASS
T = TEMPERED GLASS



A

8" DEEP CURTAIN
WALL SYSTEM W/ 1" INSULATING
GLASS
T = TEMPERED GLASS

WINDOW ELEVATIONS

SCALE: 1/4" = 1'-0"

1